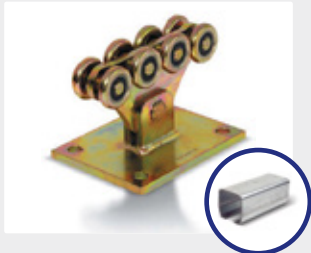


THE BEST LINE OF CANTILEVER IN THE INDUSTRY

PowerGate

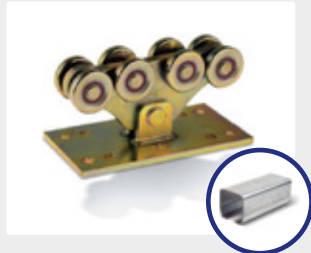
POWERGATE ACCESS SYSTEMS

11-13511 Crestwood Pl
Richmond, BC V6V 2G1



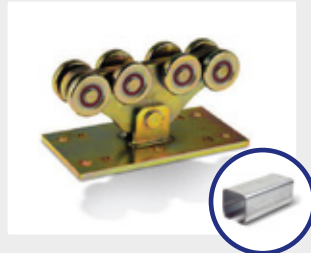
Rolling Center Small

- Handles up to 20' openings at 990 lbs
- Size: 2.75" x 2.36" (WxH)
- Track gauge: 0.137"
- Carriage wheels are gold plated
- High end bearings



Rolling Center Large

- Handles up to 27' openings at 1320 lbs
- Size: 3.7" x 3.43" (WxH)
- Track gauge: 0.196"
- Carriage wheels are gold plated
- High end bearings



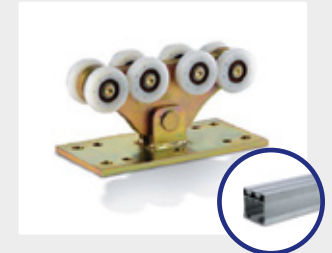
Rolling Center Large #2

- Handles up to 36' openings at 1980 lbs
- Size: 3.7" x 3.43" (WxH)
- Track gauge: 0.198"
- Track is S355 steel
- Carriage wheels are gold plated
- High end bearings



Rolling Center Magnum

- Handles up to 53' openings at 2640 lbs
- Size: 5.35" x 5.63" (WxH)
- Track gauge: 0.236"
- Carriage wheels are gold plated
- High end bearings



Rolling Center Aluminum

- Handles up to 20' openings at 750 lbs
- Size: 3.9" x 4.4" (WxH)
- Carriage wheels are gold plated with nylon wheels
- High end bearings

Accessories



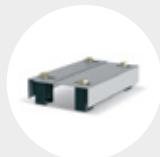
End Caps



Receiving Brackets



Gate Stops



Roller Guides



Rollers



Support Wheels



Tensioners

www.powergateonline.com

E: info@powergateonline.com

PH: (604) 273-4004

F: (604) 273-4001

PowerGate carries Cantilever products from

Rolling Center

Comunello